

551 MADISON

Partial 10th floor

3,520 RSF

- + Furniture can be made available
- + Move-in ready opportunity
- + Boutique office with customizable layout
- + Logo and brand prominence
- + Owner-occupied building

551 MADISON AVENUE, NEW YORK, NEW YORK 10022



551 MADISON

Partial 10th floor

3,520 RSF

Designed for work.

551 Madison is a 17-story modern building in the heart of the Plaza District. Designed for meaningful work, our spaces feature mindful touches that enhance focus, productivity, and collaboration.



WORKAT551.COM

©2023 Lexin Capital, 551 Madison Avenue, Suite 400, New York, NY 10022. This information has been obtained from sources believed reliable. We have not verified it and make no guarantee, warranty or representation about it. Any projections, opinions, assumptions or estimates used are for example only and do not represent the current or future performance of the property. You and your advisors should conduct a careful, independent investigation of the property to determine to your satisfaction the suitability of the property for your needs. To see additional Lexin properties visit lexincapital.com.

551 MADISON

Partial 10th floor

3,520 RSF

DESIGN PHILOSOPHY

Our office spaces are designed for meaningful work. We've put great care into aesthetic and environmental details. So your team can focus, be more productive, and collaborate better together in the office as opposed to home. We know that when it comes to work, space matters.

WORKAT551.COM

©2023 Lexin Capital, 551 Madison Avenue, Suite 400, New York, NY 10022. This information has been obtained from sources believed reliable. We have not verified it and make no guarantee, warranty or representation about it. Any projections, opinions, assumptions or estimates used are for example only and do not represent the current or future performance of the property. You and your advisors should conduct a careful, independent investigation of the property to determine to your satisfaction the suitability of the property for your needs. To see additional Lexin properties visit lexincapital.com.

10th floor office #1



10th floor office #2



10th floor reception area



10th floor office #3

551 MADISON

Partial 10th floor

3,520 RSF

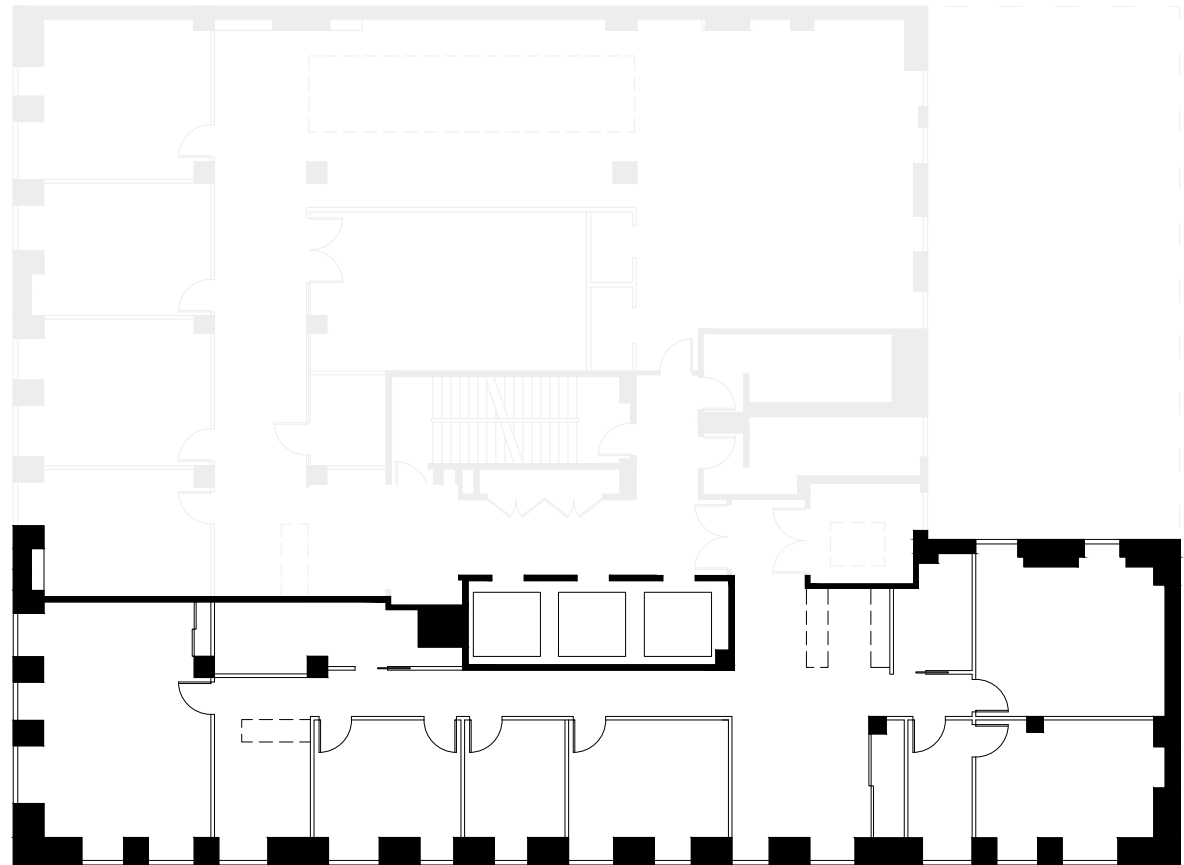
CUSTOMIZABLE LAYOUT

- + Furniture can be made available
- + Move-in ready opportunity
- + Boutique office with customizable layout
- + Recently renovated entry lobby with 24/7 attendant
- + HVAC controlled by individual offices
- + Logo and branding opportunity
- + Owner-occupied building

WORKAT551.COM

©2023 Lexin Capital, 551 Madison Avenue, Suite 400, New York, NY 10022. This information has been obtained from sources believed reliable. We have not verified it and make no guarantee, warranty or representation about it. Any projections, opinions, assumptions or estimates used are for example only and do not represent the current or future performance of the property. You and your advisors should conduct a careful, independent investigation of the property to determine to your satisfaction the suitability of the property for your needs. To see additional Lexin properties visit lexincapital.com.

Madison Avenue



55th Street

551 MADISON

Partial 10th floor

3,520 RSF

DESIGN PHILOSOPHY

Our office spaces are designed for meaningful work. We've put great care into aesthetic and environmental details. So your team can focus, be more productive, and collaborate better together in the office as opposed to home. We know that when it comes to work, space matters.

WORKAT551.COM

©2023 Lexin Capital, 551 Madison Avenue, Suite 400, New York, NY 10022. This information has been obtained from sources believed reliable. We have not verified it and make no guarantee, warranty or representation about it. Any projections, opinions, assumptions or estimates used are for example only and do not represent the current or future performance of the property. You and your advisors should conduct a careful, independent investigation of the property to determine to your satisfaction the suitability of the property for your needs. To see additional Lexin properties visit lexincapital.com.

Building lounge (4th floor)



4th floor lounge meeting table



4th floor private lounge and event space

551 MADISON

Partial 10th floor

3,520 RSF

METIN NEGRIN

mnegrin@workat551.com
(212) 750-3500

AARON MARCUS

amarcus@workat551.com
(212) 750-3500

WORKAT551.COM

©2023 Lexin Capital, 551 Madison Avenue, Suite 400, New York, NY 10022. This information has been obtained from sources believed reliable. We have not verified it and make no guarantee, warranty or representation about it. Any projections, opinions, assumptions or estimates used are for example only and do not represent the current or future performance of the property. You and your advisors should conduct a careful, independent investigation of the property to determine to your satisfaction the suitability of the property for your needs. To see additional Lexin properties visit lexincapital.com.

Custom build-out renderings



Entryway rendering



Arrival lounge rendering



Conference room and hallway rendering

551 MADISON

Partial 10th floor

3,520 RSF

METIN NEGRIN

mnegrin@workat551.com
(212) 750-3500

AARON MARCUS

amarcus@workat551.com
(212) 750-3500

WORKAT551.COM

©2023 Lexin Capital, 551 Madison Avenue, Suite 400, New York, NY 10022. This information has been obtained from sources believed reliable. We have not verified it and make no guarantee, warranty or representation about it. Any projections, opinions, assumptions or estimates used are for example only and do not represent the current or future performance of the property. You and your advisors should conduct a careful, independent investigation of the property to determine to your satisfaction the suitability of the property for your needs. To see additional Lexin properties visit lexincapital.com.

Service and amenities

24/7 Concierge Check-In

You clients will enter through our recently renovated lobby and check-in with our professional 24/7 attendant.

Premier Management

Cushman & Wakefield is known as a top-tier management company. Our service and building staff are among the best.

Owner-Occupied

The Lexin Capital ownership team is located on the 4th floor. We're on a first-name basis with most of our tenants.

Private Lounge & Event Space

Our private lounge and meeting space can be booked by any building tenant for day or evening events.



551 MADISON

Partial 10th floor

3,520 RSF

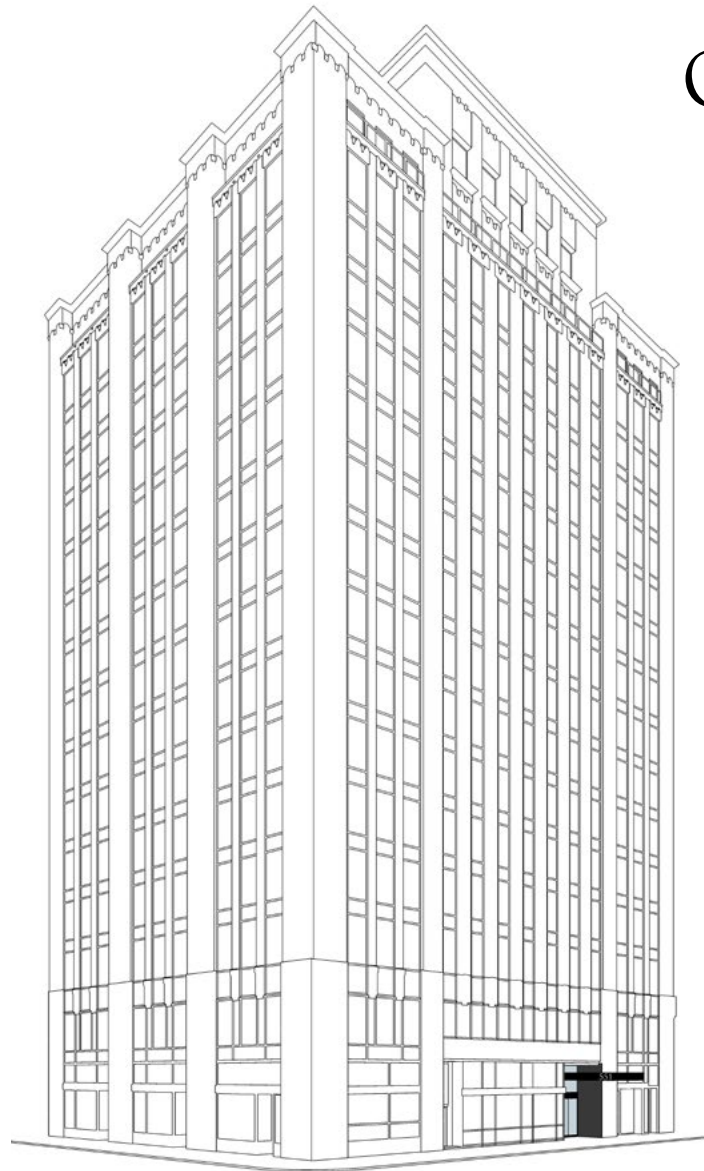
BUSINESS IN MIDTOWN

Midtown Manhattan is the largest central business district in the world. It is known as the country's largest office concentration and a major hub for media, entertainment, and financial businesses.

551 is located in the heart of this commercial and retail corridor, with close proximity to everything your business needs to thrive.

WORKAT551.COM

©2023 Lexin Capital, 551 Madison Avenue, Suite 400, New York, NY 10022. This information has been obtained from sources believed reliable. We have not verified it and make no guarantee, warranty or representation about it. Any projections, opinions, assumptions or estimates used are for example only and do not represent the current or future performance of the property. You and your advisors should conduct a careful, independent investigation of the property to determine to your satisfaction the suitability of the property for your needs. To see additional Lexin properties visit lexincapital.com.



Our building

UNBEATABLE LOCATION

Our building is located prominently on the northeast corner of Madison Avenue and 55th Street, within New York's most premier business district.

- Plaza District prestige
- Blocks from Central Park
- Convenient to transportation
- Near retail and restaurants
- Proximity to other businesses



551 MADISON

OWNERSHIP

Visit lexincapital.com
for more properties

LEASING

info@workat551.com
(212) 750-3500

MANAGEMENT

Operated by
Cushman & Wakefield

551 MADISON AVENUE, NEW YORK, NEW YORK 10022

