
551 Madison Avenue

MIDTOWN
NEW YORK, NY

NEWMARK



551 MADISON AVENUE

Property Details

Location

East block between East 55th and 56th Streets

Approximate Size

Space A*

Ground Floor 1,497-3,243 SF

*Logical divisions considered

Space B

Lower Level 6,000 SF

Sub Lower Level 5,500 SF

Ceiling Height

Space A over 14 FT

Space B over 12 FT

Frontage

28 FT on Madison Avenue

Term

Negotiable

Possession

Immediate

Site Status

Space A- Formerly The Walking Company

Space B- Formerly Bally Total Fitness

Neighbors

Grand Seiko (coming soon), Allen Edmonds, Robert Marc, Breitling, Oliver Peoples, Sephora, Reiss, Rimowa and Carmina

Comments

Prominently located amongst the world's most luxurious retailers on Madison Avenue

Space has recently undergone significant cosmetic improvements

The 3,243-SF Ground Floor entrance can be combined with the Lower Level spaces

Space B has a dedicated street level entrance on East 55th Street and over 11,000 SF of legal selling space spread over two levels

Unique opportunity for private membership clubs looking to be in the Madison Avenue submarket

Venting possible

551 MADISON AVENUE

Space A



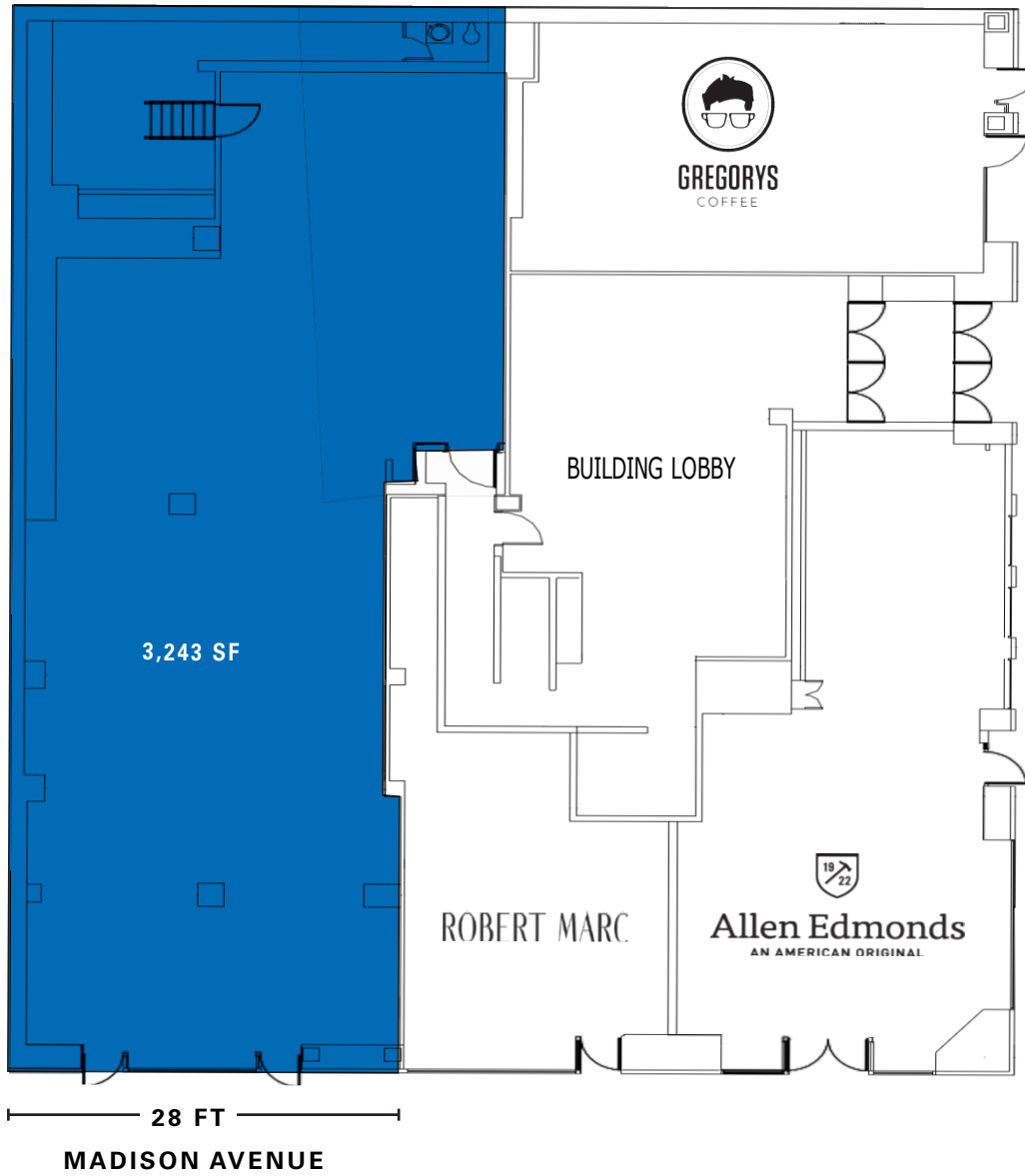
Interior Photos



551 MADISON AVENUE

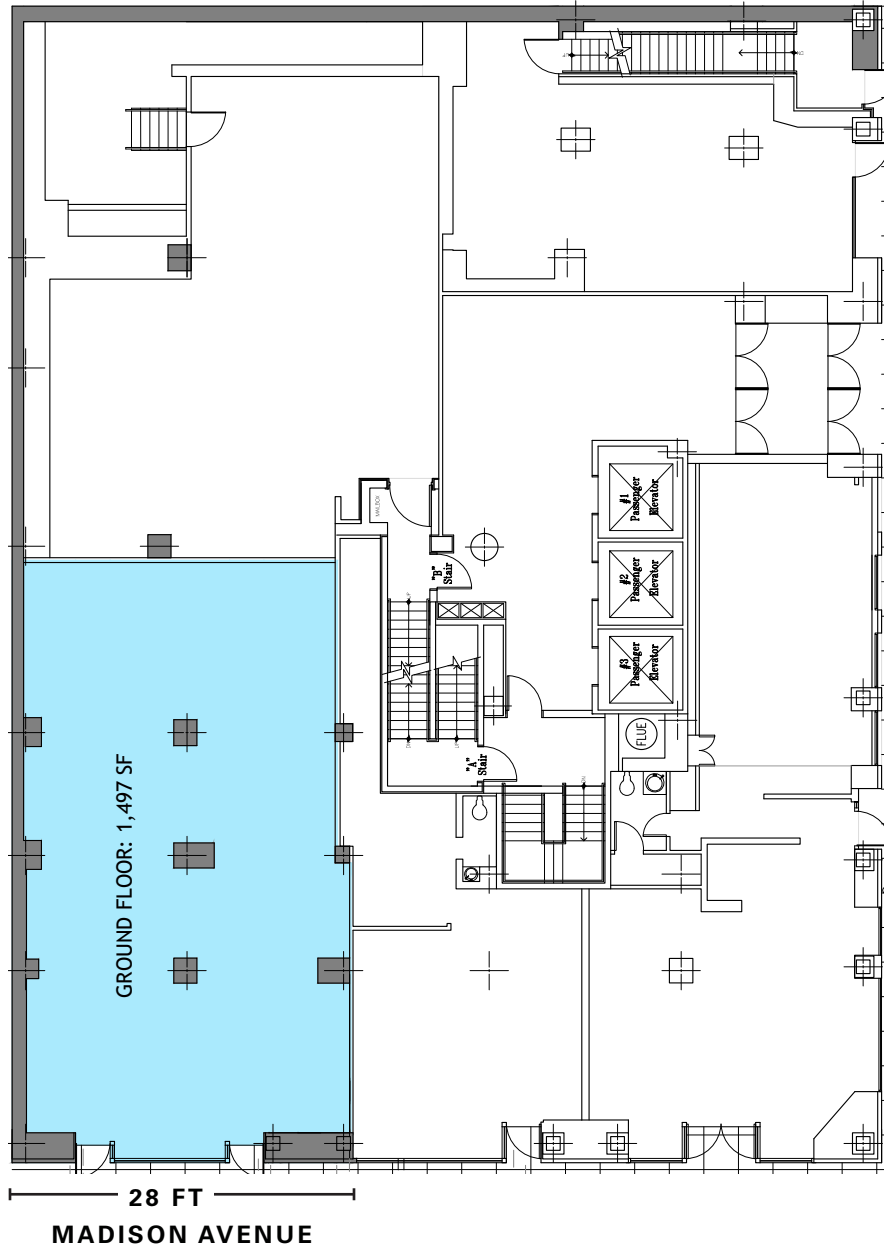
Floor Plan

Ground Floor



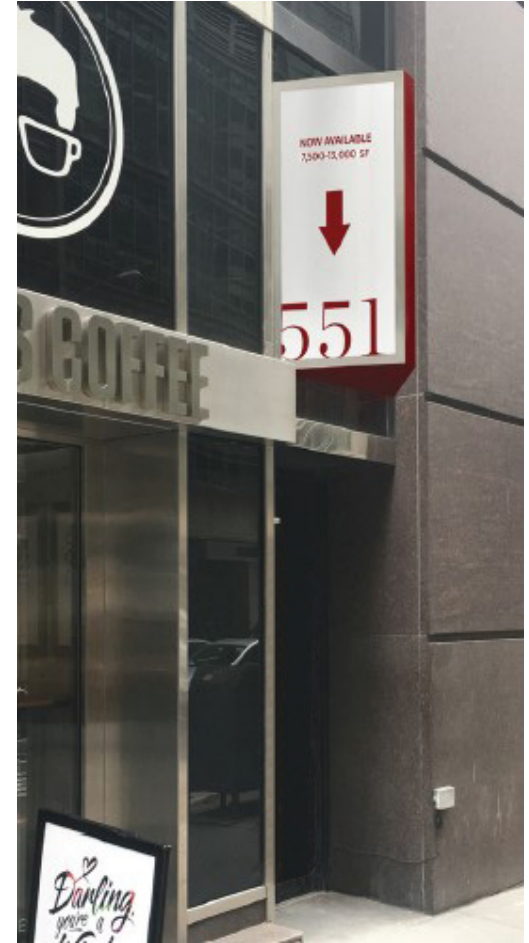
551 MADISON AVENUE

Proposed Division Plan



551 MADISON AVENUE

Space B Entrance



Interior Photos



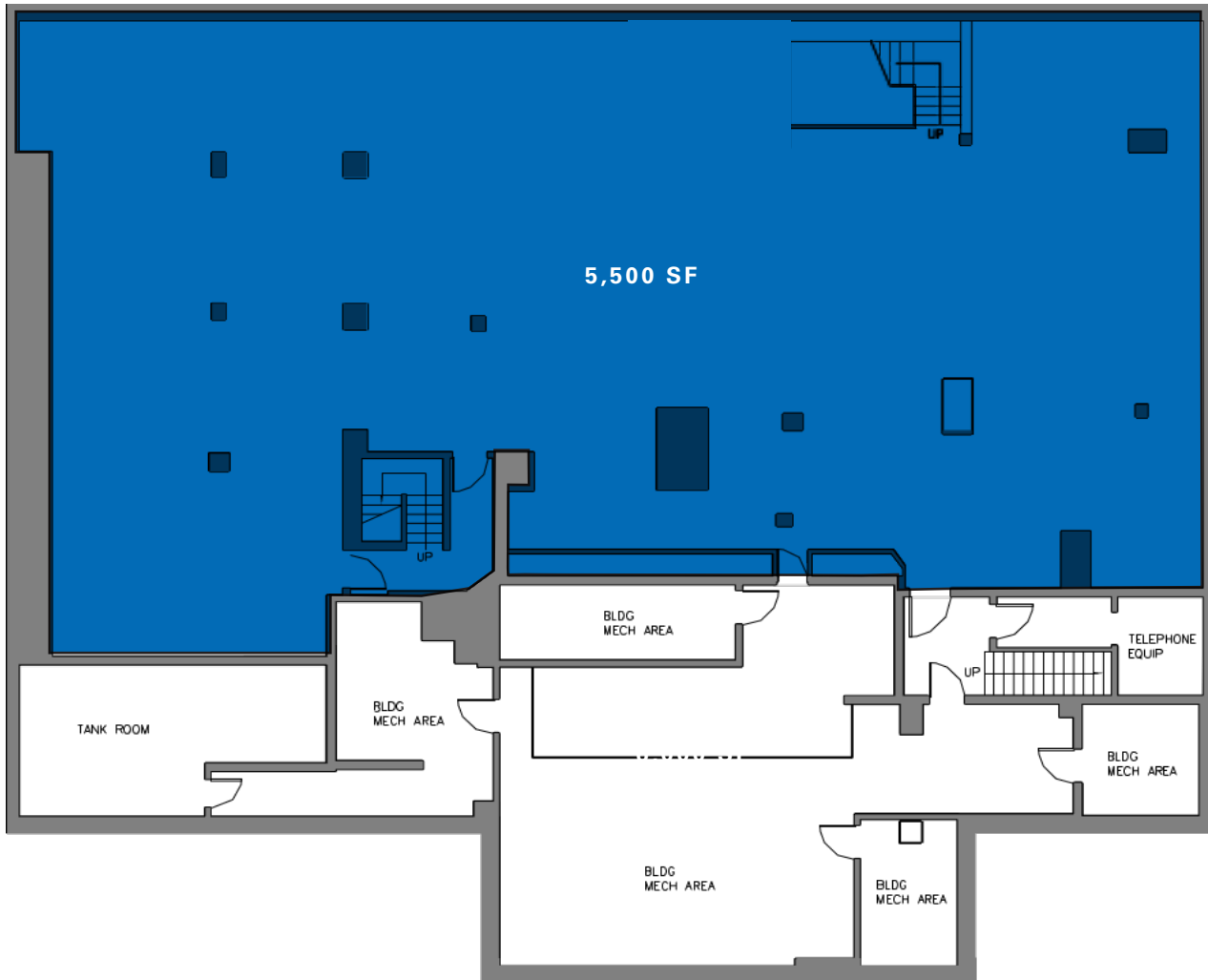
Proposed Floor Plan

Lower Level

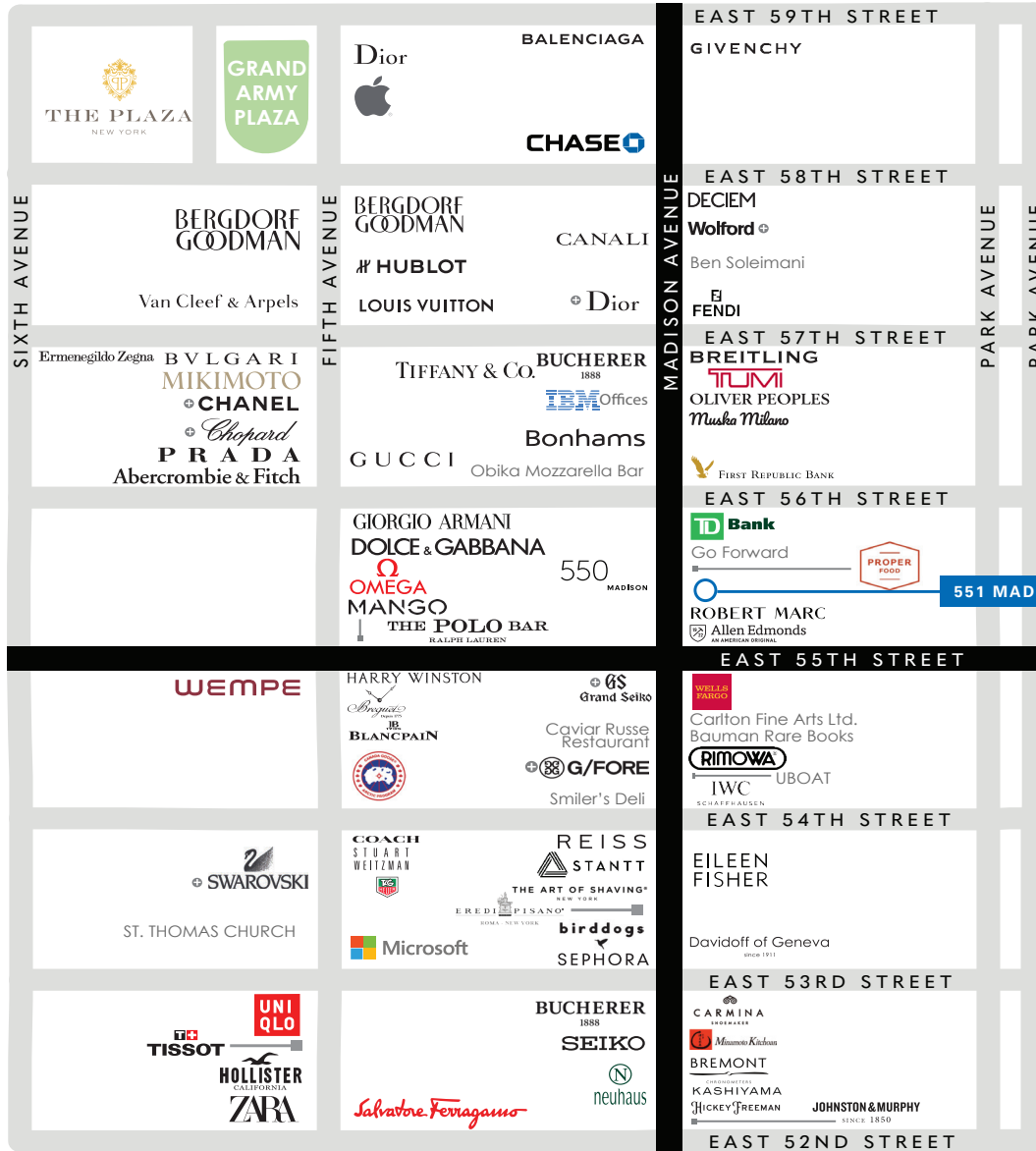


Proposed Floor Plan

Sub Lower Level



551 MADISON AVENUE



CONTACT

Michael Paster
 t 212-351-9345
 michael.paster@nmrk.com

Jackie Totolo
 t 212-916-3392
 jackie.totolo@nmrk.com

nmrk.com

+ COMING SOON

©2022 NEWMARK The information contained herein has been obtained from sources deemed reliable but has not been verified and no guarantee, warranty or representation, either express or implied, is made with respect to such information. Terms of sale or lease and availability are subject to change or withdrawal without notice.