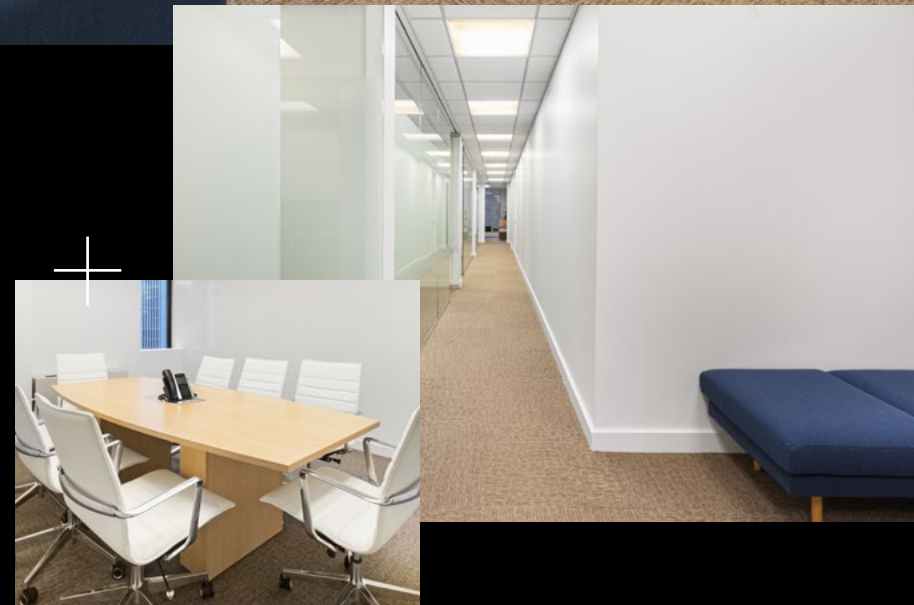


# 551 MADISON

## Partial 12th floor

3,412 RSF

- + Fully furnished and move-in ready
- + Two premium corner offices
- + Five additional offices, plus 8-person bullpen
- + Meeting room, kitchen, and reception space
- + Owner-occupied building



551 MADISON AVENUE, NEW YORK, NEW YORK 10022

# 551 MADISON

## Partial 12th floor

3,412 RSF

### FURNISHED & MOVE-IN READY

- + Two premium corner offices
- + Five offices plus 8-person bullpen
- + Meeting room, kitchen, reception
- + Fully furnished and wired
- + Recently renovated entry lobby with 24/7 attendant
- + HVAC controlled by individual offices
- + Logo and branding opportunity
- + Owner-occupied building

[WORKAT551.COM](http://WORKAT551.COM)

©2023 Lexin Capital. 551 Madison Avenue, Suite 400, New York, NY 10022. This information has been obtained from sources believed reliable. We have not verified it and make no guarantee, warranty or representation about it. Any projections, opinions, assumptions or estimates used are for example only and do not represent the current or future performance of the property. You and your advisors should conduct a careful, independent investigation of the property to determine to your satisfaction the suitability of the property for your needs. To see additional Lexin properties visit [lexincapital.com](http://lexincapital.com).

# Designed for work.

551 Madison is a 17-story modern building in the heart of the Plaza District. Designed for meaningful work, our spaces feature mindful touches that enhance focus, productivity, and collaboration.



Recently renovated lobby



24/7 lobby attendant



Building event space

551 MADISON

# Partial 12th floor

3,412 RSF

FURNISHED & MOVE-IN READY

- + Two premium corner offices
- + Five offices plus 8-person bullpen
- + Meeting room, kitchen, reception
- + Fully furnished and wired
- + Recently renovated entry lobby with 24/7 attendant
- + HVAC controlled by individual offices
- + Logo and branding opportunity
- + Owner-occupied building



Large conference room, fully furnished



Fully furnished and move-in ready



Premium executive offices, fully furnished and wired

WORKAT551.COM

©2023 Lexin Capital. 551 Madison Avenue, Suite 400, New York, NY 10022. This information has been obtained from sources believed reliable. We have not verified it and make no guarantee, warranty or representation about it. Any projections, opinions, assumptions or estimates used are for example only and do not represent the current or future performance of the property. You and your advisors should conduct a careful, independent investigation of the property to determine to your satisfaction the suitability of the property for your needs. To see additional Lexin properties visit [lexincapital.com](http://lexincapital.com).

551 MADISON

## Partial 12th floor

3,412 RSF

FURNISHED & MOVE-IN READY

- + Two premium corner offices
- + Five offices plus 8-person bullpen
- + Meeting room, kitchen, reception
- + Fully furnished and wired
- + Recently renovated entry lobby with 24/7 attendant
- + HVAC controlled by individual offices
- + Logo and branding opportunity
- + Owner-occupied building

WORKAT551.COM

©2023 Lexin Capital, 551 Madison Avenue, Suite 400, New York, NY 10022. This information has been obtained from sources believed reliable. We have not verified it and make no guarantee, warranty or representation about it. Any projections, opinions, assumptions or estimates used are for example only and do not represent the current or future performance of the property. You and your advisors should conduct a careful, independent investigation of the property to determine to your satisfaction the suitability of the property for your needs. To see additional Lexin properties visit [lexincapital.com](http://lexincapital.com).



Two premium corner offices, entire space fully furnished

551 MADISON

# Partial 12th floor

3,412 RSF

FURNISHED & MOVE-IN READY

- + Two premium corner offices
- + Five offices plus 8-person bullpen
- + Meeting room, kitchen, reception
- + Fully furnished and wired
- + Recently renovated entry lobby with 24/7 attendant
- + HVAC controlled by individual offices
- + Logo and branding opportunity
- + Owner-occupied building

WORKAT551.COM

©2023 Lexin Capital, 551 Madison Avenue, Suite 400, New York, NY 10022. This information has been obtained from sources believed reliable. We have not verified it and make no guarantee, warranty or representation about it. Any projections, opinions, assumptions or estimates used are for example only and do not represent the current or future performance of the property. You and your advisors should conduct a careful, independent investigation of the property to determine to your satisfaction the suitability of the property for your needs. To see additional Lexin properties visit [lexincapital.com](http://lexincapital.com).



Reception area



Kitchen with pantry



Elevator lobby



Five glass-fronted offices plus 8-person bullpen

# 551 MADISON

## Partial 12th floor

3,412 RSF

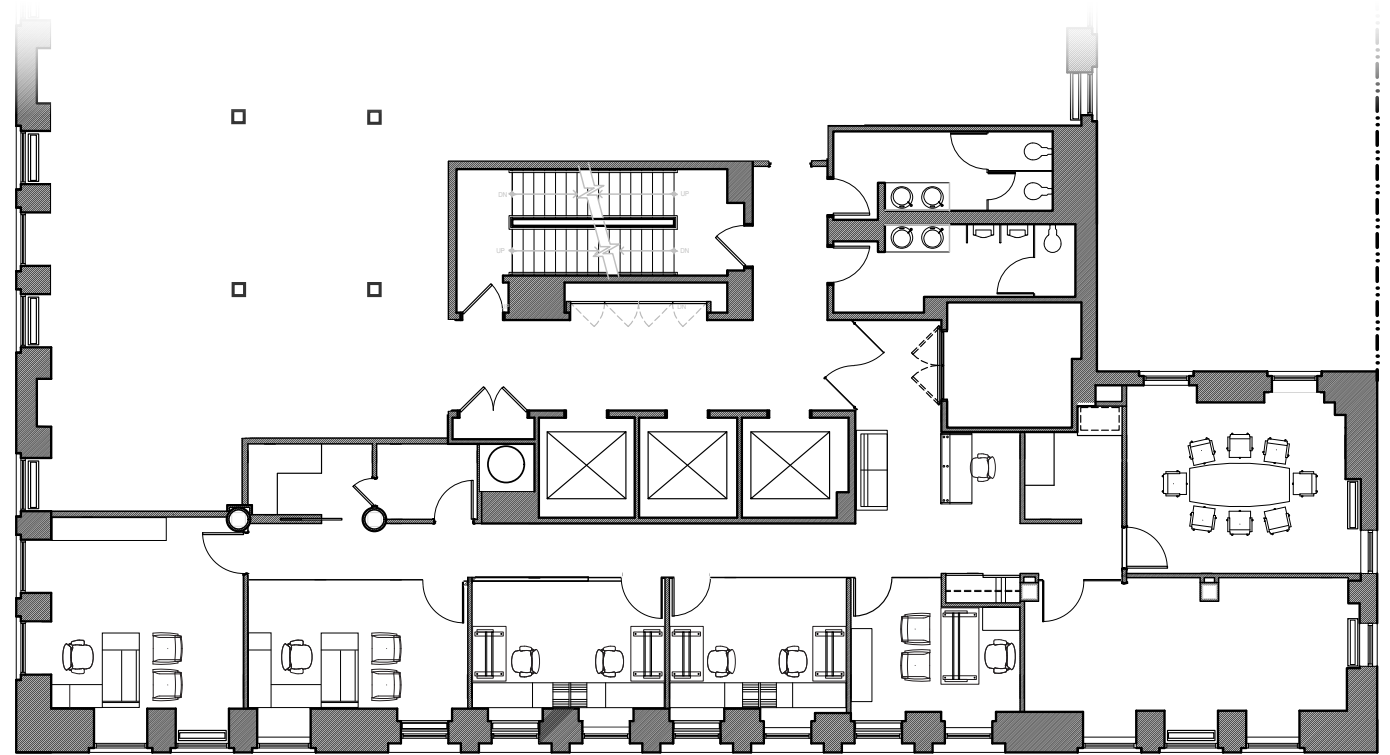
METIN NEGRIN

[mnegrin@workat551.com](mailto:mnegrin@workat551.com)  
(212) 750-3500

AARON MARCUS

[amarcus@workat551.com](mailto:amarcus@workat551.com)  
(212) 750-3500

[WORKAT551.COM](http://WORKAT551.COM)



Office-intensive layout

55th Street

©2023 Lexin Capital, 551 Madison Avenue, Suite 400, New York, NY 10022. This information has been obtained from sources believed reliable. We have not verified it and make no guarantee, warranty or representation about it. Any projections, opinions, assumptions or estimates used are for example only and do not represent the current or future performance of the property. You and your advisors should conduct a careful, independent investigation of the property to determine to your satisfaction the suitability of the property for your needs. To see additional Lexin properties visit [lexincapital.com](http://lexincapital.com).

551 MADISON

# Partial 12th floor

3,412 RSF

## DESIGN PHILOSOPHY

Our office spaces are designed for meaningful work. We've put great care into aesthetic and environmental details. So your team can focus, be more productive, and collaborate better together in the office as opposed to home. We know that when it comes to work, space matters.

[WORKAT551.COM](http://WORKAT551.COM)

©2023 Lexin Capital. 551 Madison Avenue, Suite 400, New York, NY 10022. This information has been obtained from sources believed reliable. We have not verified it and make no guarantee, warranty or representation about it. Any projections, opinions, assumptions or estimates used are for example only and do not represent the current or future performance of the property. You and your advisors should conduct a careful, independent investigation of the property to determine to your satisfaction the suitability of the property for your needs. To see additional Lexin properties visit [lexincapital.com](http://lexincapital.com).

4th floor conference table



4th floor private lounge

551 MADISON

## Partial 12th floor

3,412 RSF

METIN NEGRIN

[mnegrin@workat551.com](mailto:mnegrin@workat551.com)  
(212) 750-3500

AARON MARCUS

[amarcus@workat551.com](mailto:amarcus@workat551.com)  
(212) 750-3500

WORKAT551.COM

©2023 Lexin Capital, 551 Madison Avenue, Suite 400, New York, NY 10022. This information has been obtained from sources believed reliable. We have not verified it and make no guarantee, warranty or representation about it. Any projections, opinions, assumptions or estimates used are for example only and do not represent the current or future performance of the property. You and your advisors should conduct a careful, independent investigation of the property to determine to your satisfaction the suitability of the property for your needs. To see additional Lexin properties visit [lexincapital.com](http://lexincapital.com).

# Service and amenities

## 24/7 Concierge Check-In

---

You clients will enter through our recently renovated lobby and check-in with our professional 24/7 attendant.

## Premier Management

---

Cushman & Wakefield is known as a top-tier management company. Our service and building staff are among the best.

## Owner-Occupied

---

The Lexin Capital ownership team is located on the 4th floor. We're on a first-name basis with most of our tenants.

## Private Lounge & Event Space

---

Our private lounge and meeting space can be booked by any building tenant for day or evening events.





551 MADISON

## Partial 12th floor

3,412 RSF

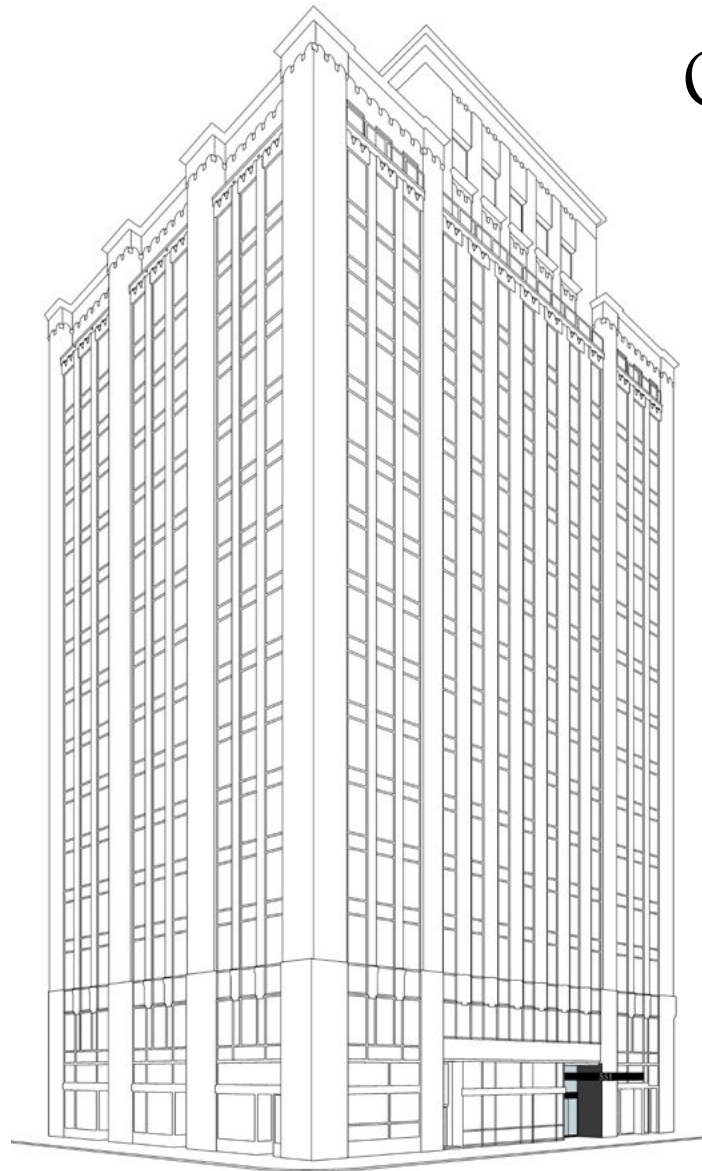
### BUSINESS IN MIDTOWN

Midtown Manhattan is the largest central business district in the world. It is known as the country's largest office concentration and a major hub for media, entertainment, and financial businesses.

551 is located in the heart of this commercial and retail corridor, with close proximity to everything your business needs to thrive.

### WORKAT551.COM

©2023 Lexin Capital, 551 Madison Avenue, Suite 400, New York, NY 10022. This information has been obtained from sources believed reliable. We have not verified it and make no guarantee, warranty or representation about it. Any projections, opinions, assumptions or estimates used are for example only and do not represent the current or future performance of the property. You and your advisors should conduct a careful, independent investigation of the property to determine to your satisfaction the suitability of the property for your needs. To see additional Lexin properties visit [lexincapital.com](http://lexincapital.com).



## Our building

### UNBEATABLE LOCATION

Our building is located prominently on the northeast corner of Madison Avenue and 55th Street, within New York's most premier business district.

- Plaza District prestige
- Blocks from Central Park
- Convenient to transportation
- Near retail and restaurants
- Proximity to other businesses



# 551 MADISON

## OWNERSHIP

Visit [lexincapital.com](http://lexincapital.com)  
for more properties

## LEASING

[info@workat551.com](mailto:info@workat551.com)  
(212) 750-3500

## MANAGEMENT

Operated by  
Cushman & Wakefield

551 MADISON AVENUE, NEW YORK, NEW YORK 10022

